



# A HOME, more than just a place

STARTS FROM  
IDR **830** mio\*

Gyan Serpong Residence is the perfect fusion between contemporary design, style and functionality. With 36 houses and 2 different distinctive floorplan options, Gyan Serpong Residence offers a private and environmental friendly neighbourhood to its residences to create their own perfect lifestyle.

- ✓ Open Plan Living
- ✓ Bay Window
- ✓ Massive Cornerless Window
- ✓ Maximizing Space
- ✓ Energy Saving
- ✓ Waste Management
- ✓ Air Circulation
- ✓ Natural Light



## FACILITIES

-  Jogging Track
-  Waste Management
-  Single Entrance Gate
-  Triple Play
-  Kids Playground
-  24 Hours Security
-  CCTV
-  Green Area
-  Underground Utilities
-  PDAM Water

MEMBER OF :



**KAVI HOOK**



**KAVI**



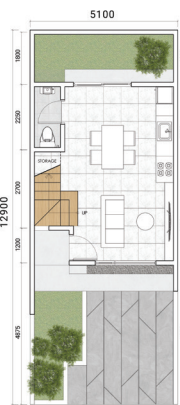
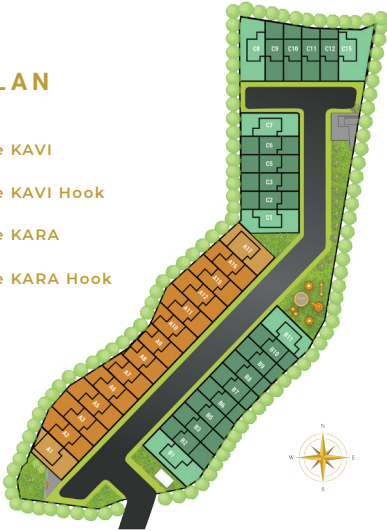
**KARA HOOK**



**KARA**

**SITE PLAN**

- Type KAVI
- Type KAVI Hook
- Type KARA
- Type KARA Hook



**KARA**

LB : 67 m<sup>2</sup>



**KAVI**

LB : 77 m<sup>2</sup>



**DISTANCE**



**5 MINUTES**

Cisauk Station

**33 MINUTES**

Alam Sutera

**30 MINUTES**

Gading Serpong

**13 MINUTES**

AEON Mall

**38 MINUTES**

Pondok Indah



**53 MINUTES**

Sudirman - Thamrin

**42 MINUTES**

Tanah Abang Centre

**CALL US!**

**021 5316 1893**

VISIT OUR  
MARKETING GALLERY

Ruko ITC BSD Blok R no. 10, BSD City

**DISCLAIMER**

While every reasonable care has been taken during preparation of this information, the developer and its agents cannot be held responsible for any inaccuracies. All statements are meant to be correct but are not to be regarded as statements or representation of fact which are legally binding. All information and specifications are correct at time of release and are subject to changes as may be required and may not be from part of an offer or contract. All plans are subject to any amendments approved by relevant authority or other related parties. Rendering and all illustrations are artists' impressions only and cannot be regarded as representation of fact. The size and dimension are approximate measurements using equipment and methods determined by the developer. Any resale of this information is prohibited, except in accordance with a sub-licensing agreement or prior written approval by the developer.

**LOCATION MAP**

